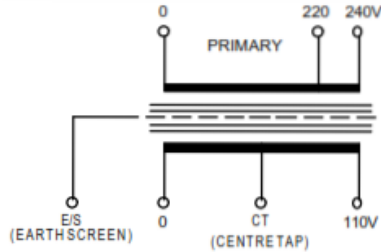




STANDARD WIRING DIAGRAM FOR A CENTRE TAPPED SECONDARY TRANSFORMER.



Below we have shown the 3 correct ways to wire the Secondary Terminals.
Voltage values shown are typical values only

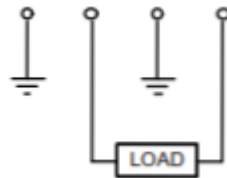
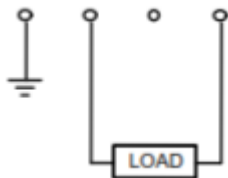
CORRECT WAY TO WIRE THE SECONDARY TERMINALS.

If both lines are earth free then the terminals are to be connected as shown below.
The wiring of the center tap terminal is optional.

55	0	55V	
0	55	110V	
0	CT	110V	
12	0	12V	
0	12	24V	
E/S	0	CT	24V

55	0	55V	
0	55	110V	
0	CT	110V	
12	0	12V	
0	12	24V	
E/S	0	CT	24V

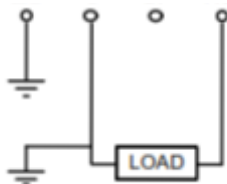
NOTE
Voltage Values listed here
are common variations.
These will vary from design to design .



If one of the Load lines is earthed you must not take the center tap to earth
The E/S terminal can always be safely taken to earth

55	0	55V	
0	55	110V	
0	CT	110V	
12	0	12V	
0	12	24V	
E/S	0	CT	24V

NOTE
Voltage Values listed here
are common variations.
These will vary from design to design .



Note :- This sheet is for guidance only. Any transformer fitted must be carried out by a qualified electrician.